



Corporate Office :

6, A-2 Building, Gururaj Society,
Near Swami Vivekanand Statue, Padmavati,
Satara Road, Pune - 411 037.

☎ : 020 - 243 78 878 | 9822 66 8888 | 9888 22 6666

Email : kbp.consultants@gmail.com



TOWARDS GREATER STABILITY

AN ISO 9001:2015 CERTIFIED COMPANY

ABOUT US :

M/S KBP Civil Engineering Services (An ISO 9001:2015 Company) is a leading Engineering consultancy firm in Maharashtra that has provided consultancy for various significant construction and Industrial projects in and around Maharashtra. We believe in exceeding clients' expectations by achieving benchmarks for transparency, reliability and integrity.

Firm established in the year 2010 by varied professionals with experience in design, consultancy and management of various residential, industrial, institutional and infrastructure projects. Since inception, it has steadily attained substantial profitability and value creation for its clients.

Firm has Non destructive Testing (NDT) Laboratory with advanced equipments, structural analysis and drafting (CAD) software.

VISION & MISSION :

We function with the vision of being our client's trusted advisor and exceed their expectations with our world-class quality services. We combine our practical engineering expertise with extensive knowledge gained over the years to provide the best and advanced solutions for our clients in a faster pace.

- To strengthen our position as a Leading Engineering consultancy Company.
- To create sustainable growth and enhanced support to our associates.
- To uphold the Highest Standards of Business Ethics and lead the way in fulfilling Corporate Social Responsibilities.

IMPANELMENT :

- Chartered Engineer at Institute of Engineers (India).
- Pune Municipal Corporation (PMC).
- Pimpri Chinchwad Municipal Corporation (PCMC).
- Municipal Corporation of Greater Mumbai (BMC).
- Public Work Department (PWD), Maharashtra.
- Central Public Work Department (CPWD).
- Department of Industrial Health & Safety (DISH).
- Institution of Valuer (India).



SERVICES :

1. STRUCTURAL DESIGN (RCC & STEEL STRUCTURES)

Analysis of structures using standard computer softwares (E.g. STAAD-Pro, SAP2000, ETabs etc.) Designing and furnishing detailed construction drawings for residential, Commercial buildings, Industrial structures, Water retaining structures and Bridges etc.



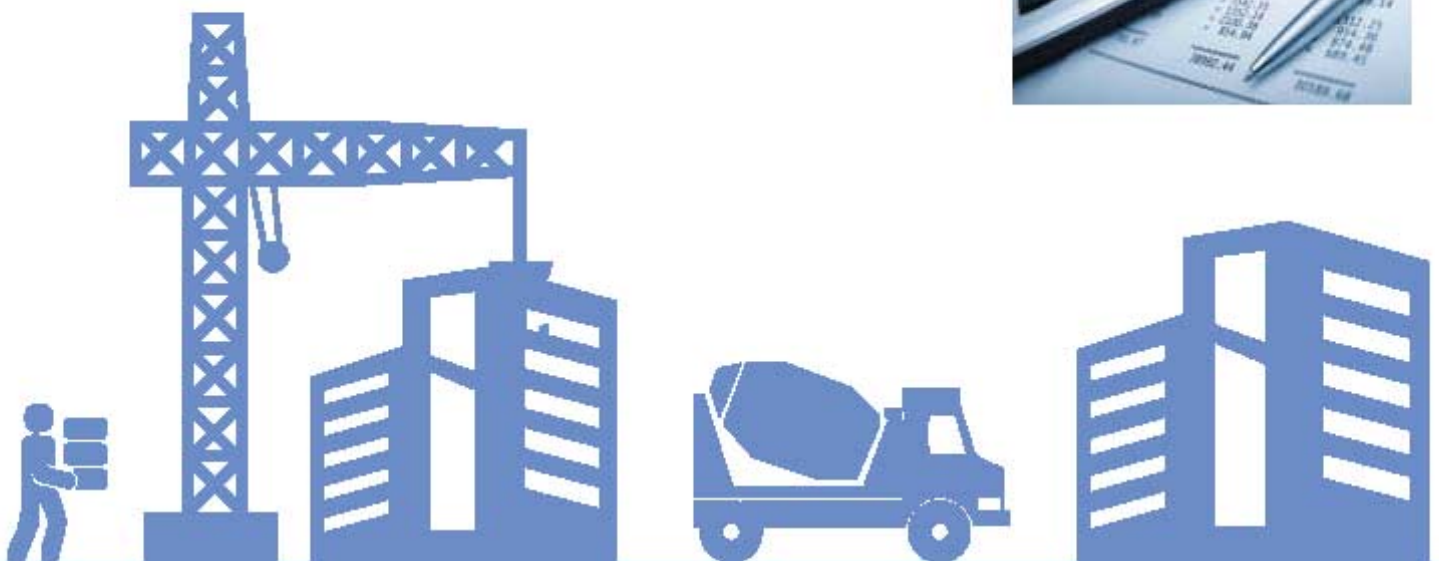
2. STRUCTURAL AUDIT & STABILITY CERTIFICATION

- Assessment of structural soundness with aid of Non- Destructive and Semi Destructive Testing, Independent analysis and design check of built structures.
- Assessment of structures for change in occupancy, future expansion, proposed modifications as per latest standards.
- Assessment of structural adequacy of structures for seismic forces as per latest standards



3. ESTIMATION & COSTING

- Quantity Estimation
- Cost Estimation as per RERA Act.



4. NON DESTRUCTIVE TESTING LABORATORY



Ultrasonic Pulse Velocity Test

This test is conducted by passing ultrasonic wave through concrete. This method assesses : Quality / compressive strength of concrete Presence of cracks & depth of crack.



Rebound Hammer Test

This test is used to provide a convenient and rapid indication of the surface compressive strength upto 50mm of concrete. Quality of concrete, Uniformity of concrete



Half Cell Potential & Resistivity Test

Determination of Corrosion Activity / percentage of the reinforcing steel by measuring its half-cell potential.



Vibration Measurement

For measuring Displacement, Velocity and Acceleration of civil structures.



Ultrasonic Thickness Gauge

An ultrasonic thickness gauge is a measuring instrument for the non-destructive investigation of a material's thickness using ultrasonic waves.



Concrete Core Cutting & Testing

Determining Compressive strength of structure identifying defect like Cracks, Voids, Honeycombing etc. Plumbing holes, Electric supply holes etc.



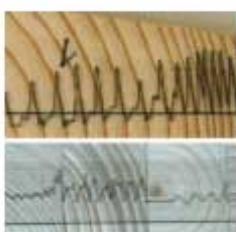
Rebar Mapping & Cover Meter Test

A cover meter is an instrument to locate rebars and measure the exact concrete cover. Rebar detectors are less sophisticated devices that can only locate metallic objects below the surface.



Pile Integrity Test

To measure Cross-sectional area, length, continuity and consistency of the pile material.



Micro-drill Test Of Timber

To identify voids and cracks in timber members.



Moisture Measurement

To identify the source of leakages and dampness place moisture meter very helpful. This measure moisture percentage.



Infrared Thermometers

To inspect the temperature of specific point of member.



Underwater Inspection

To inspect underwater structures such as Columns, Pile foundations, Bridge piers, Water tanks etc.



Bore Scope Camera

To inspect the In-accessible areas of structures, building components, Heritage structures, pipes etc.



Drone Camera Inspection

To inspect the In-accessible tall structures and multi storey buildings.

5. SOIL TESTING & FOUNDATION DESIGN

Investigation by drilling Bore Holes, conducting Field Tests, collecting Samples carrying out Laboratory Tests and furnishing Report with Recommendations.

Designing Foundation Systems & Earth Retaining Structures, study of Structures subjected to settlement / foundation failure and suggesting Remedial Measures.



6. BUILDING MATERIAL TESTING LABORATORY

Tests on building materials such as Cement, Flyash, Aggregates, Sand, Bricks, Blocks, Tiles, Wood etc. as per relevant Indian Standards.

Mix Designs for Normal, High Performance, Self Compacting, Concrete.



7. PROJECT MANAGEMENT & QUALITY CONTROL

Independent / Third Party Agency to monitor the Quality of construction by our specialized teams through continuous supervision or periodic Inspections.

Quality Inspection of materials and works including Form Work, Fabrication, Concreting and Finishes.

Quality Supervision, Assurance and Safety Inspections.



8. VALUATION OF IMMOVABLE PROPERTY

Property valuation mainly deals with valuation of Lands, Buildings for various purposes like Bank Loan, Arbitration, Bank Guarantee, Insurance, Solvency etc.



9. Repair & Retrofitting Contractor

Repair and Rehabilitation of concrete structure either for durability or strengthening

- Column Jacketing
- Beam Fiber Wrapping
- Epoxy Grouting
- Water Proofing Treatment
- Heritage Structure



• PROJECTS COMPLETED :

Residential Buildings :



Morning Dew, Shinde Builders,
Ambegaon, Pune.



Vighnaharta Heights,
Vighnaharta Developers,
Katraj, Pune.



Staff Quarter Building,
Akurdi, PCMC.



Residential Quarters
at PGIMER, Chandigarh.

Commercial / Institutional Buildings :



Institute of Reserve Studies ONGC
(Oil and Natural Gas Corporation)
Ahmedabad, Gujarat



School Buildings, Katraj,
Pune Municipal Corporation
(PMC).



Hospital Building at Akurdi,
Pimpri Chinchwad
(PCMC)



Court Building at Morwad,
Pimpri Chinchwad
(PCMC)

Industrial Structures :



Heavy Water Plant,
Bedoda, Gujarat.



Patrol Pump, Pune-Satara Road,
Indian Oil Corporation



UKB Electronics Pvt. Ltd.,
Ranjangaon MIDC.



The Hutti Gold Mine Ltd.,
Raichur, Govt. of Karnataka.

• PROJECTS COMPLETED :

Water Retaining Structure :



Elevated Storage Reservoir (ESR), Kalewadi, PCMC.



Water Treatment Plant, Nigedi, PCMC.



Storage Bins at Hutti Gold Mine, Raichur, Karnataka.



Culvert at Dapodi, Pune.

Special Structure :



Pantawane Bridge, Ratnagiri, Nagar Parishad, Ratnagiri.



Khaperkheda Thermal Power Plant, Mahagenco, Nagpur, Maharashtra.



Ghadgar Hydro Power Station, Mahagenco, Thane, Maharashtra.



RCC Chimney at Khaperkheda, Thermal Power Plant, Mahagenco, Nagpur.

• OUR PUBLICATIONS



Performance Evaluation of Existing RCC Structure



Dr. J. S. Chavan
Professor, Department of Civil Engineering,
The Institute of Engineers, Nagpur



Book published on

"Performance Evaluation of Existing RCC Building"
by Lambert Publication, Germany.

available on all shopping websites like amazon, ebay etc.

Paper presented and published on

"Structural Audit" in National Seminar at Nagpur,
organised by The Institution of Engineers, India.

Images of front & back side of book.

• OUR VALUABLE CLIENTS



Department of Atomic Energy,
Govt. of India.



Oil & Natural Gas Corporation
(ONGC)



Indian Oil Corporation Ltd.



Public Work Department (PWD),
Maharashtra



Maharashtra State Generation Company Ltd.
(MahaGenco)



The Hutti Gold Mine Company Limited
(Govt. of Karnataka UT)



Chandigarh (Union Territory)
Administration



Pune Municipal Corporation
(PMC)



Pimpri Chinchwad Municipal Corporation
(PCMC)



Parbhani City Municipal Corporation



सुलापूर
नगरपालिका

सळेगाव दाभाडे नगरपालिका,
पुणे.



Regd. Office :
Sr. No. 46/5,
Behind Telco Colony,
Ambegaon Bk., Katraj,
Pune, Maharashtra - 411 016.

Corporate Office :
6, A-2 Building, Gururaj Society,
Near Swami Vivekanand Statue,
Padmavati, Satara Road,
Pune - 411 037.

Laboratory Address :
Sr. No. 49, Next to Valduct,
Jambhulwadl,
Pune-Bangalore Bypass,
Pune 411-046.

☎ : 020 - 243 788 78 | ☎ : 9822 66 8888 | 8888 22 6688

Email : kbp.consultants@gmail.com